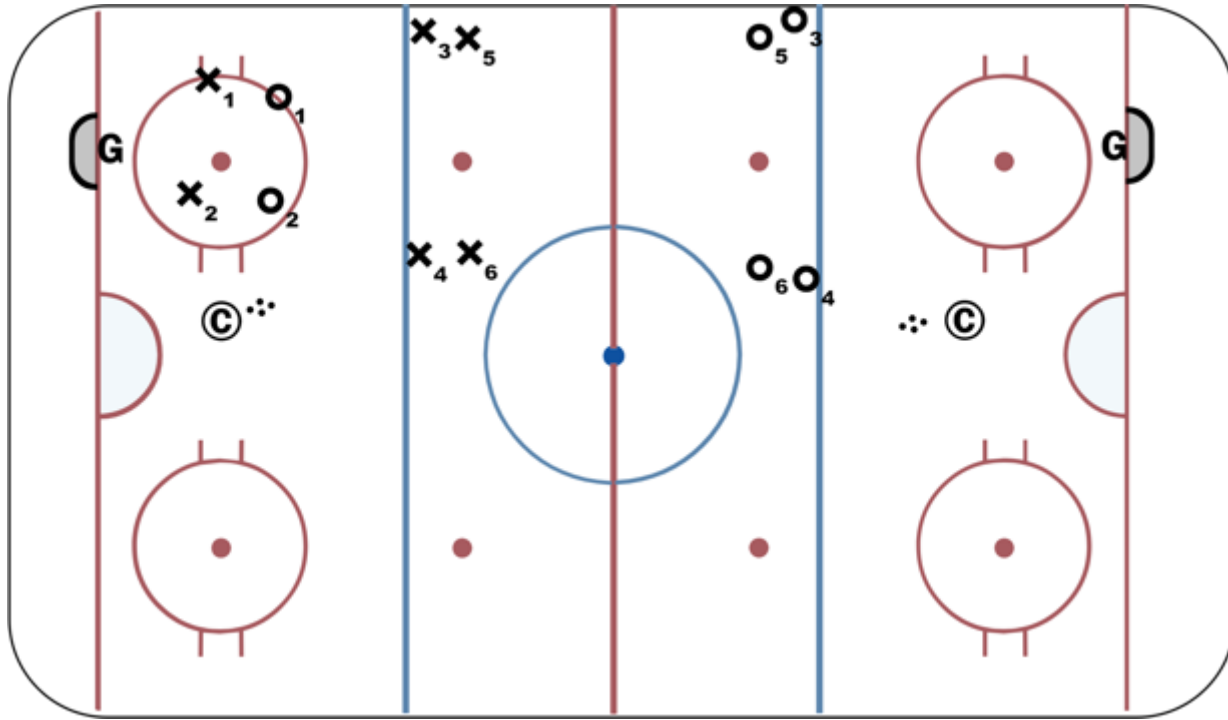


Eaves 2 on 2



Description

2 on 2 is played in one end.

As drawn X1 and X2 are defending the left end and when they gain possession will pass to X3 and X4 at the blue line who will skate to attack the far end.

O1 and O2 will try to score at the left end.

Once X3 and X4 get the puck then O1 and O2 must defend the right end and get puck to next pair of Os at blue line.

If puck goes out of play a coach will throw another puck in.