



# Bucks Summer Skate

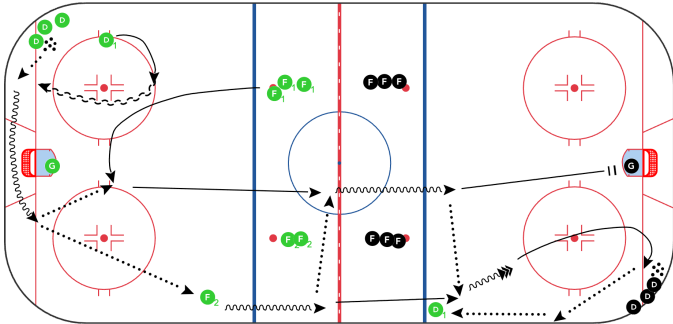
Date: Aug 21 2024

Time: 3:28 am

Duration: 53 mins

## Cam Neely

8 mins



On whistle, D1 pivots at top of circle and retrieves puck from corner and wheels behind net

F1 swings slow and low for middle breakout pass, F2 stops at hash marks and joins breakout

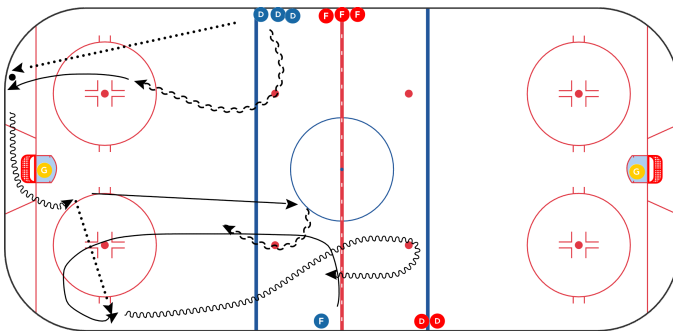
D1 follows rush

F1 and F2 play catch and kick puck out on zone entry, take shot with net drive

F2 picks up second puck in corner and rims up to D on blue line for shot with net presence

## Avalanche 1on1

7 mins



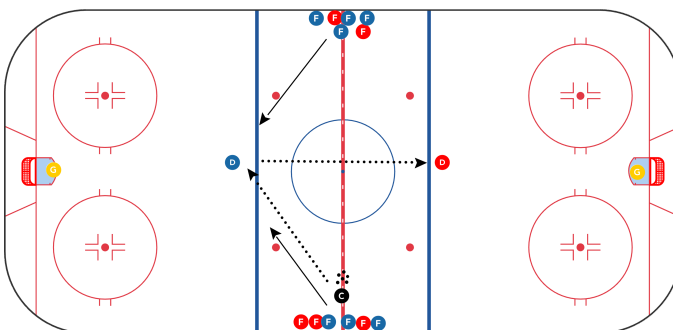
D back peddles and retrieves puck in corner and wheels net

F steps out into dot line and opens up for breakout pass

D stops at top of circles, hard back to hash marks, and gaps up with forward for 1on1

## Yeezy 2on1

10 mins



Coach passes to D1

2 forwards forecheck D1

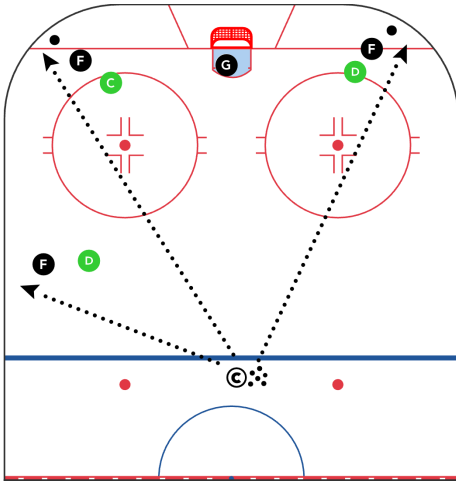
D1 passes puck through forecheck to D2

If pass gets through to D2, forwards regroup and go 2on1 vs D1

If pass doesn't get through, 2 forwards carry on and play 2on1 vs D1

### 3 1on1's Plus 3on3

8 mins



Rim puck to force first touch escape

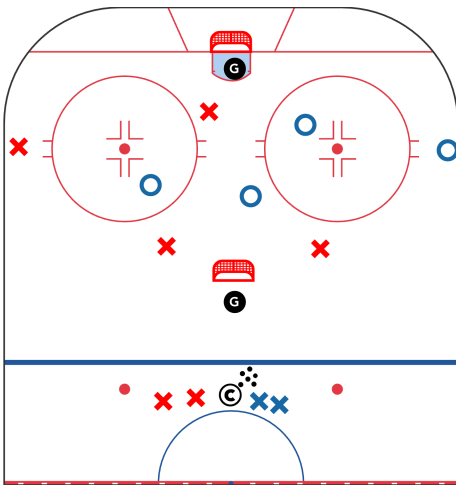
First three sets of forwards and D play 1on1 out of corner on whistle.

On third whistle all players play 3on3.

Blow the whistle after 15 seconds or so, or a goal, scoring chance, or possession switch

### 3on3 Levels

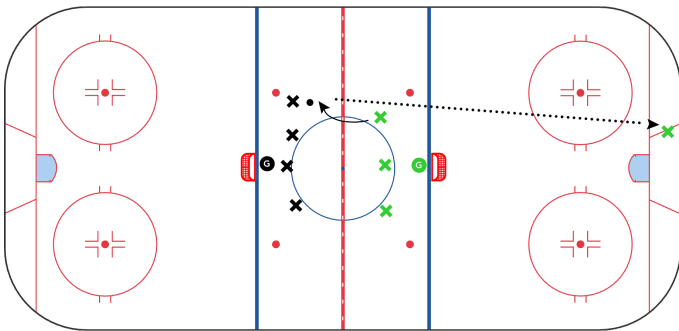
10 mins



3on3 with stationary outlet for possession pass, can score on either net.

### Polar Express

10 mins



Team blue starts and attacks 4 vs 3

Red has a trigger player below the goal line

When trigger player gets puck, blue changes, trigger activates, red attacks 4on3

4 new blue players, one plays the trigger position below goal line until possession switch