

# Red Wings Power play 3v2 x 2 SIG



**MIN. NUMBER OF PLAYERS:**

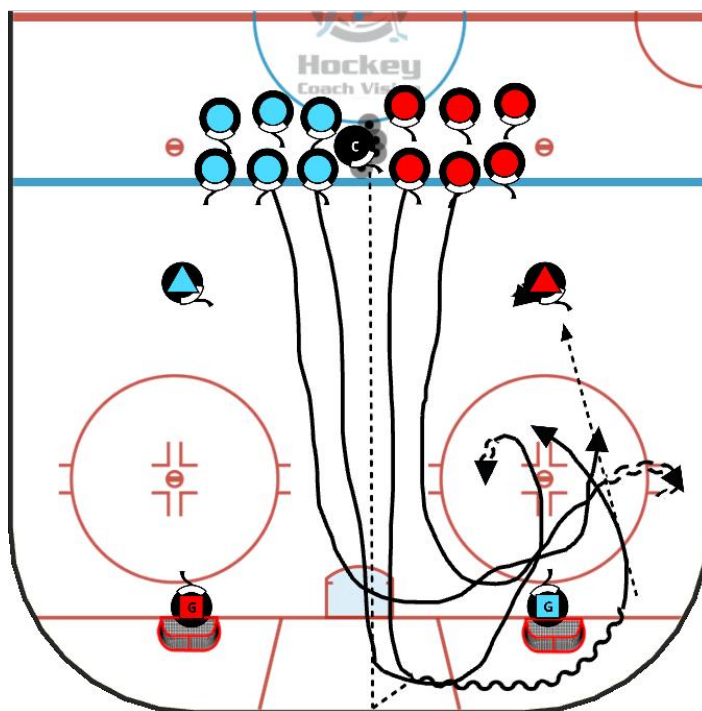
OFF / DEF / GK - 2 / 4 / 2

**LEVELS:**

13-14, 15-16, SEMIPRO, PRO, 17-20

**TAGS:**

3 vs. 2, end zone, half ice, o-zone, passing, pp / pk, scoring, screen / tip, small area game, tactics



**DESCRIPTION:**

Two nets are set up on goal line in front of the face off dots. One point shooter/passer from each team is placed above the circles facing their opposing goalie. The Coach starts play by chipping a puck off of the end boards to create a 2v2 battle for the puck. Upon recovering the puck, the player moves it quickly up to his point man as other players set up in a small 3v2 power play situation. The point man should move laterally to provide pass and shot options from above the circle.

**KEYPOINTS:**

- Encourage shooting the puck and crashing the net for rebounds.
- Low players should also work on their screening technique.
- To encourage shooting the puck quickly, the Coach can use a shot clock where the players have to get a shot off within 10-15 seconds or the puck is turned over to the other team.

**NOTES:**

---



---



---



---



---



---

