

S4S 18 Wally's Dot Tag



MIN. NUMBER OF PLAYERS:

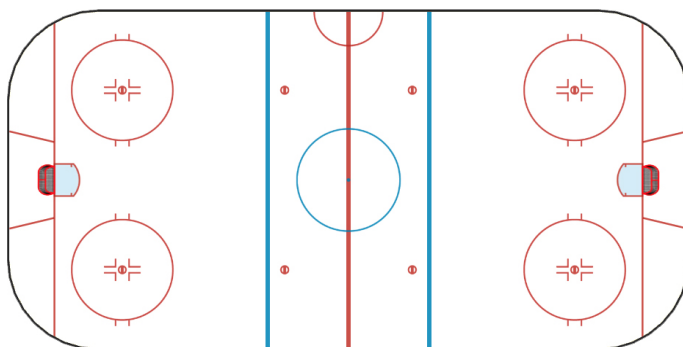
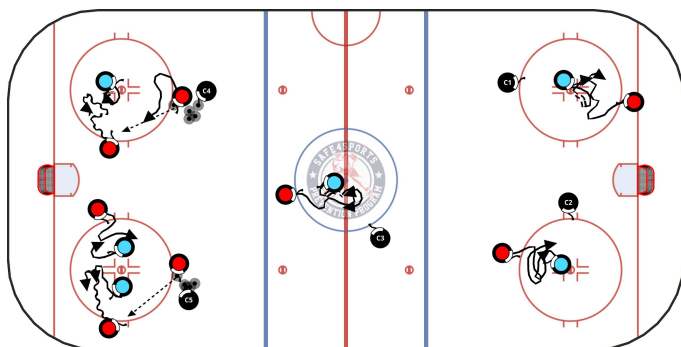
OFF / DEF / GK - 2 / 2 / 0

LEVELS:

13-14, 11-12, 08-10

TAGS:

passing, skating, stick-handling, tactics



DESCRIPTION:

Five stations using the circles as boundaries are used in this game. Have players rotate through the stations to experience different situations and progressions of learning in these checking skill games. The objective is to offensively get to the dot, and defensively to defend the dot in all games. Coaches choose tag of the dot with a hand, skate, stick or puck. In station C1 and at section C2 at centre ice players are without sticks. At station C2 players have sticks. Pucks can be added in subsequent trials. At station C4 and C5 forwards place partners to pass and drive against either one defender (station C4) or two as illustrated in station C5.

KEYPOINTS:

Offensive 1-on-1 individual tactics that involve skating skill choices and application as well as body position and creative use of fakes, feints and dekes. Puck skills are added in the progressions. Cue on correct and ideal body position in all contact situations. Remind and discuss where the hands are. Penalize holding. Offense players "and create ice". Defensemen take away and limit ice and space, "close the gap". With pucks and in 2-on-1 and 2-on-2 keep sticks active and on the ice. "See attackers and defend space".

NOTES:
