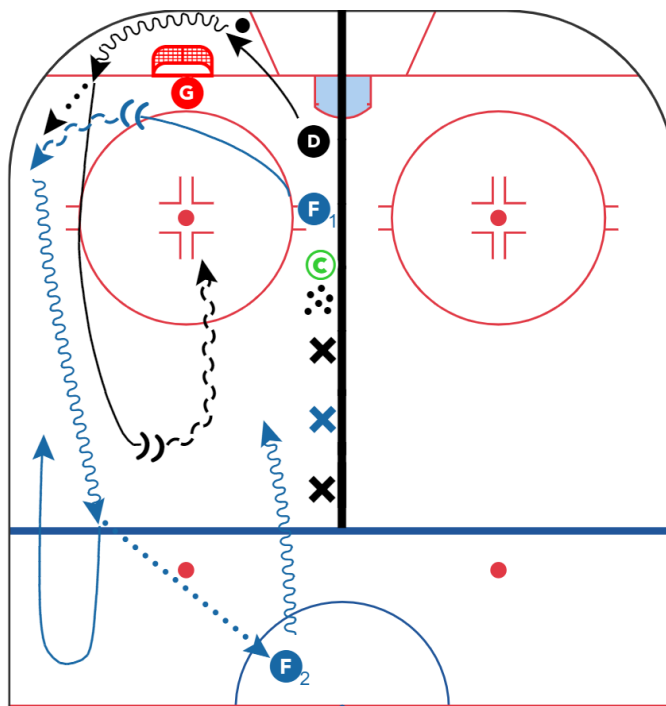


Breakout Regroup 2 vs 1 Station



Description

- Coach dumps a puck below the goal line. **D** retrieves the puck and carries it around the net.
- **F1** gets wide and opens up for a breakout pass from the **D**.
- After receiving the breakout pass, **F1** regroups with **F2** who is in the neutral zone, and they attack the **D** who started the breakout on a 2v1 rush.

Key Points

- Shoulder check on puck retrieval
- Open up and present a good target for the breakout pass
- Emphasize gap control