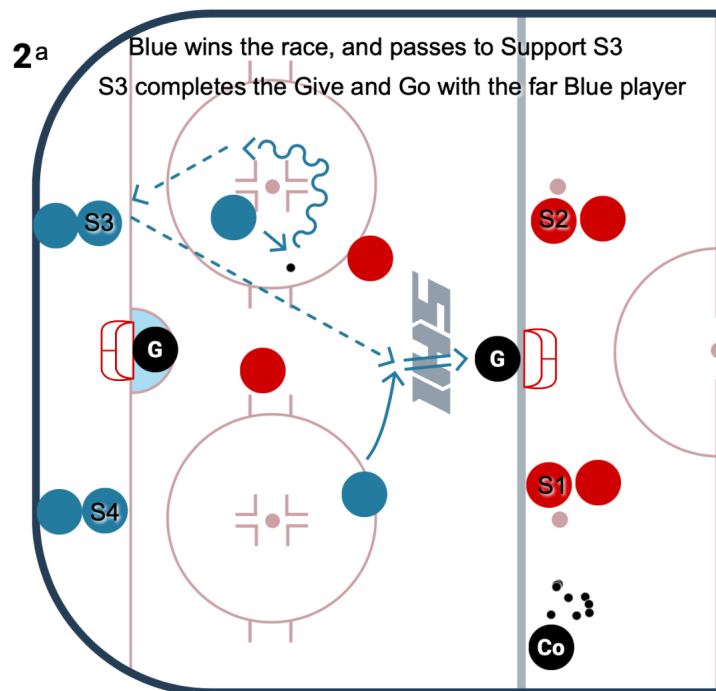
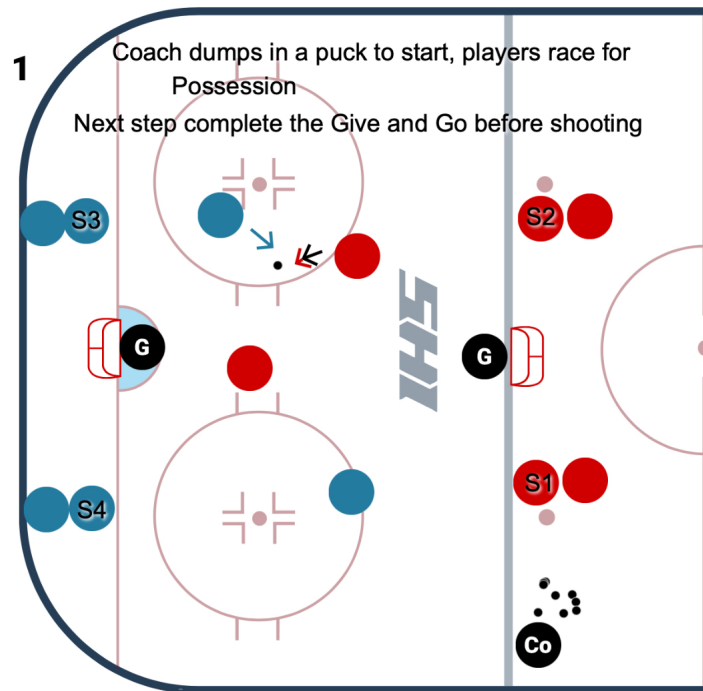


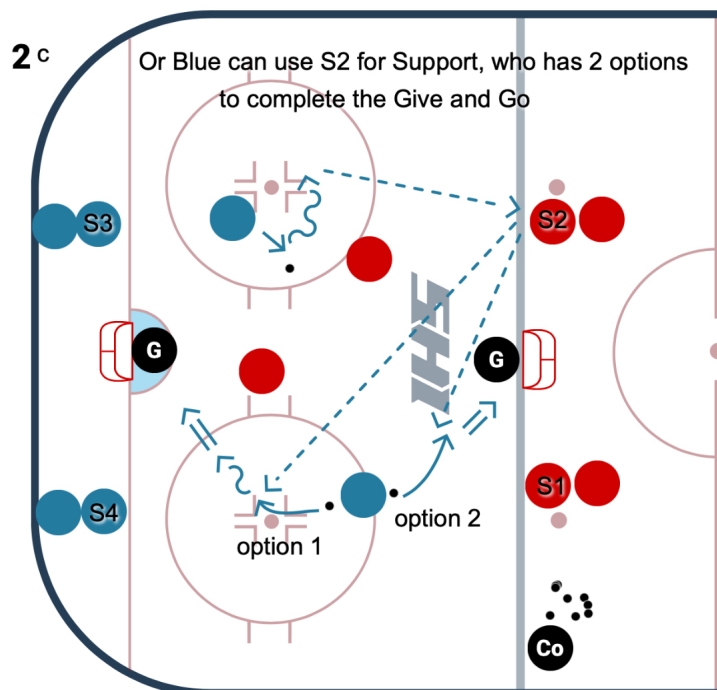
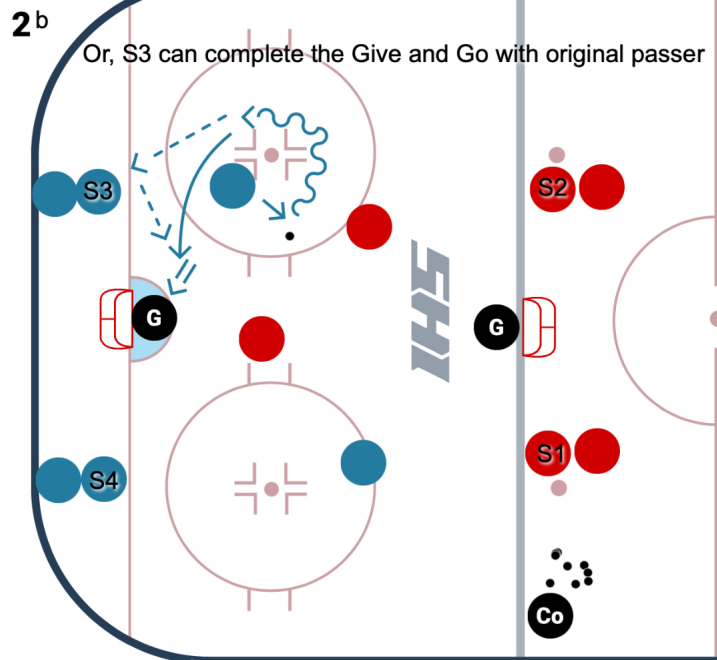
# HANNAH'S GAME



Time:

Station:





OVERVIEW: 2V2 + 4 Support Players, Score on Either Net

KEY TEACHING POINTS: Great high-paced small game to focus on:  
 give and goes  
 offensive players moving away from Pressure to get Open/Attack  
 encourage creative thinking and movement by the Offensive Players  
 help develop Speed of Thought in Offensive Attacks

Remind players to work hard to get open to attack, work together on offense. Defensively players need to get sticks in passing lanes, and communicate which player they are covering as the offensive players have Options.

Point of emphasis is taking pride in your passes (to the support players) and return passes to the players in the game.

SETUP: Players start as shown with Blue team in 2 lines on the blue line, and Red team 2 lines on the Goal line. Both teams put 2 player in the game to start.

Important: Players can score on either net. The next players in each line are Support players, and play with the team that gave them a pass (even if Red passed to Blue, Blue must return the puck to a Red player).

Rules:

If the puck goes over the goal line or blue line, it's dead and coach will spot a new one in the zone. On a goal or a save controlled by the goalie, that puck is dead and the coach will spot a new one. Finally, before you shoot on goal your team must make a pass to either of the next Support players in line (S1, S2, S3, S4) , and they must complete a return pass to either the passer or passer's teammate.

Illustrations:

1- Coach dumps a puck in and the Red and Blue players race to get it

2a- Blue player wins the race making a pass to Support player S3. S3 sees the Blue (not the one who made the initial pass), stretching the ice and opening up a passing lane, and completes the Give and Go to that Blue player who shoots on Goal

2b- Another option when the Blue player wins the puck and makes the pass to S3, is for that Blue player to move quickly to open space for a quick return pass from S3 for a shot on Goal

2c- Shows 2 options when the Blue player wins the race to the puck and makes a pass to Red Support 3. The other Blue player has 2 options if Red Support 2 returns the pass. Reading where the open passing options may be, S2 can return the pass to that Blue player who can attack either net for a shot looking to move away from Red Defense/Pressure for the best scoring option

Coaches should keep the shifts short, demand the tempo is high.